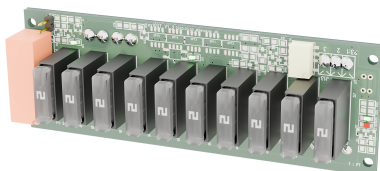


PRODUCT SHEET - POWER SUPPLY FROM MILLETEKNIK

Product image



Name, article number and e-number

Name, article number and email number

| Name | Item number | E-number (sv) |
|---------------------------|----------------|---------------|
| 10 Output module for 1U02 | A-FU002410OP02 | 52 137 12 |

Designation

Extends 10 output module ATO 24V 1HE with ten outputs.

Area of use

10 Output Module ATO 24V distributes and secures power to up to ten 24V applications. It fits seamlessly into 10 Output Module ATO 24V 24V 1HE. Alarm in case of fuse failure via LED and relay. Three of the cargo exits are priority, while seven are unpriority. In the event of a power outage, the voltage on the unsecured outputs is broken. Need more connections? Easily expand with two extra cards and get a total of 30 outputs

Common uses

- For the expansion of more 24V applications in access systems, such as door environments.
- For more devices in security applications in alarm systems, such as magnetic holders.

Technical description

Cancellation board with ten 1-pole capped outputs. Each output has a blade fuse and can be loaded with up to 2 A per output and a maximum of 10 A for the entire board

Voltage, current and power

Voltage in: 27.3 V DC, (24 V).

Voltage Out: 27.3 V DC, (24 V).

Self-consumption is the power outlet the circuit board has when the system is deployed and in battery operation.

Self-consumption

| Circuit Boards | Self-consumption (in battery operation) | Commentary |
|--------------------|-----------------------------------------|------------|
| 10 out ATO modules | data is missing | |

Outputs

Ten 1-pole secured load outputs, three of which can be configured as unsecured to break in the event of a power outage.

Alarm

Fuse failure is indicated via LED and a switching relay for quick troubleshooting.

Fuses

Load fuses:

Indications and communication

LED on card lights up when incoming supply is connected and output is connected.

Weight

Weight.

| Name | Net weight | Weight incl. packaging |
|----------------------|------------|------------------------|
| 10 Output module ATO | 0.1 kg | 0.2 kg |

Installation requirements

Can only be installed in 10 Output Module ATO 24V 1HE

Requirements that the product meets

The product meets the following requirements.

| | |
|--------------|-------------------------------------------------------------------------------------------------------------------|
| EMC: | EMC Directive 2014 / 30EU |
| Electricity: | Low voltage directive: 2014/35 / EU |
| CE: | CE directive according to: 765/2008 |
| Environment | REACH Regulation: Directive 1907/2006, WEEE Regulation: Directive 2002/96/EC, RoHS Regulation: Directive 2015/863 |

**NOTE**

The product is part of electrical systems, is subject to the relevant electrical and safety directives and is not a machine according to the Machinery Directive (2006/42/EC).

**Guarantee**

The product has a two-year warranty for manufacturing defects.

Manufacturing, lifespan, environmental impact and recycling

Manufactured by Milleteknik in Partille, Sweden.

The product is designed for a long service life, which reduces the environmental impact. End-of-life products are handed over to the nearest recycling centre.

About this information

All information is published subject to possible errors. Information is updated without prior notice.

Publication date 2025-04-28